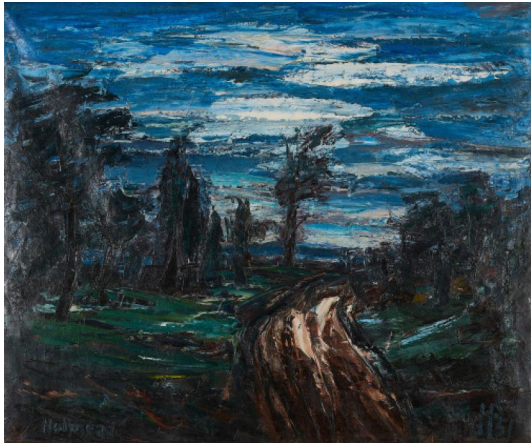


Lot 53



Auction Modern Art | ONLINE ONLY

Date 09.09.2022, ca. 08:39

HOLMEAD (CLIFFORD HOLMEAD PHILLIPS)
1889 Shippensburg/Pennsylvania - 1975 Brussels

Title: "Landscape" (Sweden).

Date: 1951.

Technique: Oil on canvas.

Mounting: Mounted on card.

Measurement: 76 x 91cm.

Notation: Signed lower left: Holmead. As well as monogrammed and dated on the lower right: HP 51. Verso titled, signed, inscribed and dated: "Landscape" (Sweden) Holmead HPinx '51.

Frame/Pedestal: Framed (81 x 95,5cm).

Condition:

Canvas minimally wavy in the upper left corner area, resp. slight pressure marks of the stretcher. Minimal rubbings in the corners. Verso minimally discoloured. Minimal stainings. Water stains in the lower centre. Adhesive tapes horizontally along the centre. Otherwise the painting is in very good condition.

We are grateful to Hans Christoph Groscurth, administrator of the estate Holmead, Frankfurt a.M., for the kind scientific support. The work will be included under the no. L 51/909 in the catalogue raisonné that is in preparation.

Exhibitions:

- 1955 Galerie Charles Barzansky, New York City (inscription verso)
- 1984 Galerie Horizons, Brussels (label verso)

Provenance:

- private collection Brussels.

Estimate: 1.500 € - 2.000 €; Hammer: 1.200 €
