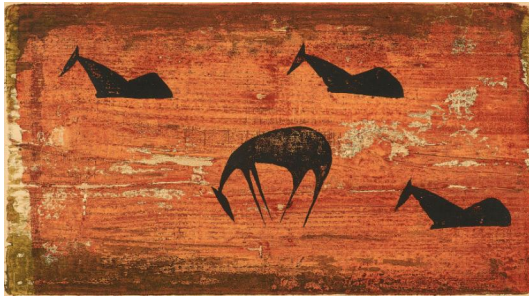


Lot 64



Auction Modern Art | ONLINE ONLY

Date 03.11.2022, ca. 19:09

MATARÉ, EWALD
1887 Aachen - 1965 Büderich

Title: Vier Pferde auf der Weide.
Date: 1935.
Technique: Colour woodcut on vellum.
Mounting: Matted. Depiction Size: 28,5 x 51cm.
Sheet Size: Mat window: 31 x 53cm.
Notation: Signed and inscribed.
Frame/Pedestal: Framed (63,5 x 81,5cm).

Condition:
Slightly wavy due to manufacturing. Minimally discoloured, minimal discoloured spots below the depiction. Otherwise good condition. Not examined out of the frame.

From the edition of 8 copies.

Provenance:
- Galerie Ludorff, Düsseldorf (label)
- Private collection North Rhine-Westphalia

Literature:
- Mataré, Sonja/Werd, Guido de: Ewald Mataré - Holzschnitte, Werkverzeichnis, Kleve 1990, cat. rais. no. 327b (P306), here with deviating inscription.

Estimate: 3.000 € - 5.000 €; Hammer: 7.500 €
