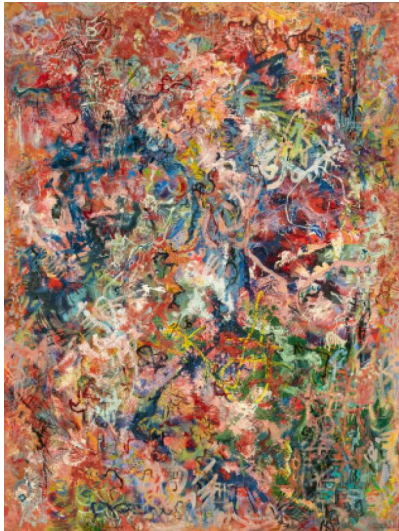


## Search 16



**Auction** Modern, Post War & Contemporary, Evening Sale

**Date** 05.06.2024, ca. 18:12

**Preview** 31.05.2024 - 10:00:00 bis  
02.06.2024 - 18:00:00

SCHULTZE, BERNARD  
1915 Schneidemühl - 2005 Cologne

Title: "Penthesilea".

Date: 1954.

Technique: Oil and Collage on fibre.

Measurement: 137,5 x 104cm.

Notation: Signed and dated lower right: Bernard Schultze 54. Also signed, inscribed, titled and dated verso right: Bernard Schultze Frankfurt/M Penthesilea 1954. also dedicated: für Ursel. Here also marked with a directional arrow. Frame/Pedestal: Craftman's frame.

Provenance:

- Private collection North Rhine-Westphalia

Exhibitions:

- Kölnischer Kunstverein/Kunstverein Braunschweig/Haus am Waldsee, Berlin/Palais des Beaux-Arts, Brussels, Cologne 1968
- Kunsthalle Darmstadt, 1968
- Schleswig-Holstein State Museum Gottdorf Castle, Schleswig 1996
- Museum Kunstpalast, Düsseldorf 2007
- Museum Kunstpalast, Düsseldorf 2010

Literature:

- Diederich, Stephan/Hermann, Barbara (ed.): Bernard Schultze - Verzeichnis der Werke, vol. II, 1939 to 1989, Cologne 2015, cat. rais. no. 54/15
- Exhib. cat. Alte und Neue Arbeiten, Kölnischer Kunstverein, Cologne 1968, cat. no. 14
- Exhib. cat. Menschenbilder, Kunsthalle Darmstadt, Darmstadt 1968, cat. no. 14
- Romain, Lothar/Wedewer, Rolf: Bernard Schultze, Munich 1991, colour plate 26
- Exhib. cat. Bernard Schultze, Schleswig-Holsteinisches Landesmuseum Schloß Gottorf, Schleswig 1996, cat. no. 6
- Althöfer, Heinz (ed.): Informel (1). (1). Der Anfang nach dem Ende, Dortmund 1999, p. 261, ill.
- Exhib. cat. Claude Monet und die Moderne, Kunsthalle der Hypo-Kulturstiftung, Munich 2001, p. 167, ill.
- Exhib. cat. Kat. Die Kunst zu sammeln, Museum Kunstpalast, Düsseldorf 2007, p. 104, ill.

- Exhib. cat. Le grand geste! Informel und Abstrakter Expressionismus 1946-1964, Museum Kunstpalast, Düsseldorf 2010, cat. no. 128, ill.

- Handwritten list of works no. 2/54

- Exciting and colourful composition from the early work of the exceptional Cologne artist

- Solitaire of museum quality

- A marvellously fresh work of outstanding quality from a long-standing private collection

VAN HAM Art Estate represents the part of Bernard Schultze's estate of Folkwang-Museumsvereins e.V., Essen since 2018: [www.bernard-schultze.org](http://www.bernard-schultze.org)

Estimate: 20.000 € - 30.000 €; Hammer: 60.000 €

---

