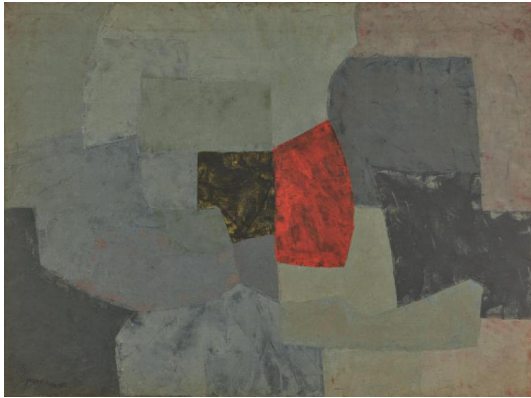


## Lot 18



**Auction** Modern, Post War & Contemporary, Evening Sale

**Date** 05.06.2024, ca. 18:13

**Preview** 31.05.2024 - 10:00:00 bis  
02.06.2024 - 18:00:00

---

POLIAKOFF, SERGE  
1900 Moscow - 1969 Paris

Title: Composition grise.

Date: 1956.

Technique: Oil on canvas.

Measurement: 97 x 130cm.

Notation: Signed lower left: SERGE POLIAKOFF.

Frame/Pedestal: Craftman's frame.

Provenance:

- Knoedler & Co, New York
- Private collection Germany

Exhibitions:

- Galerie S. Mamède, Lisbon 1972 (label)
- Musée Fabre, Montpellier 1974
- Musée des Beaux-Arts, La-Chaux-de-Fonds 1975
- Galerie Melki, Basel 1976 (label)
- Pori Art Museum, Pori/Finland 1983
- Helsinki Art Gallery, 1984
- Malmö Konsthall, 1984 (label)
- Association Campredon Art et Culture, L'Isle-sur-la-Sorgue 1986 (label)
- Fondation Pierre Gianadda, Martigny 1987
- The Seibu Museum of Art, Tokyo 1988 (label)
- Tsukashin Hall, Amagasaki 1988
- Galerie Melki, Paris 1991 (label)
- Museum Würth, Künzelsau 1997
- Künstlerhaus Vienna, 1998

Literature:

- Poliakoff, Alexis: Serge Poliakoff - Catalogue Raisonné, vol. II, 1955-1958, Paris 2010, cat. rais. no. 56-76, ill.

- Exhib. cat. Poliakoff, Galeria S. Mamède, Lisbon 1972, cat. no. 16, ill.
  - Exhib. cat. Serge Poliakoff, Musée Fabre, Montpellier 1975, cat. no. 13
  - Exhib. cat. Serge Poliakoff, Musée des Beaux-Arts, La-Chaux-de-Fonds 1975, cat. no. 13
  - Exhib. cat. Klar Form II, Pori Art Museum, Pori 1984/Malmö Konsthall, 1984, cat. no. 88, ill.
  - Exhib. cat. Serge Poliakoff, Association Campredon Art et Culture, L'Isle-sur-la-Sorgue 1986, p. 17, ill.
  - Exhib. cat. Serge Poliakoff, Fondation Pierre Gianadda, Martigny 1987, p. 17, ill.
  - Exhib. cat. Serge Poliakoff, The Seibu Museum of Art, Tokyo 1988/Tsukashin Hall, Amagasaki 1988, cat. no. 29, p. 46, ill.
  - Exhib. cat. Serge Poliakoff, Galerie Melki, Paris 1991, cat. no. 29, p. 81, ill.
  - Exhib. cat. Poliakoff - Eine Retrospektive, Museum Würth, Künzelsau 1997, p. 138, ill.
  - Exhib. cat. Serge Poliakoff, Künstlerhaus Vienna, 1998, p. 138, ill.
  - Durozoi, Gérard: Serge Poliakoff, Angers 2001, p. 188 ill.
- In the year this painting was created, Poliakoff was the winner of the prestigious Premio Lissone
- The brushstroke creates an immense plasticity and liveliness in the centre of the balanced composition
- Impressive exhibition history with important exhibitions in Europe and Asia

Estimate: 200.000 € - 300.000 €; Hammer: 190.000 €

---

