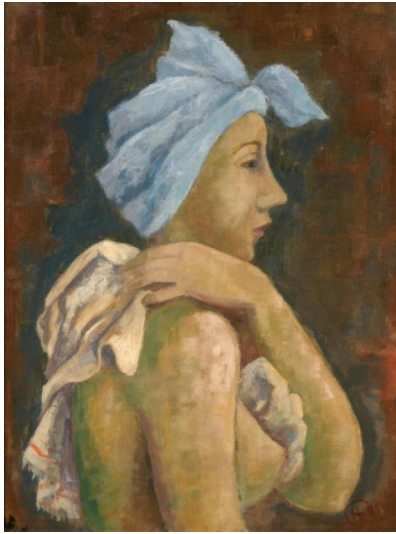


Lot 8



Auction Modern, Post War & Contemporary, Evening Sale

Date 27.11.2024, ca. 18:06

Preview 22.11.2024 - 10:00:00 bis
25.11.2024 - 18:00:00

HOFER, KARL
1878 Karlsruhe - 1955 Berlin

Title: Sich Abtrocknende mit Turban.

Date: 1941.

Technique: Oil on canvas.

Measurement: 61 x 46cm.

Notation: Monogrammed and dated lower right: CH 41 (ligated).

Frame/Pedestal: Framed.

Provenance:

- Private collection New York (directly from the artist)
- Parke Bernet Galleries, New York, auction 11th February, 1953, lot 70
- Private collection Bremen
- Galerie Bertram, Bremen (label)
- Private collection Rhineland
- Private collection North Rhine-Westphalia

Literature:

- Wohlert, Karl Bernhard: Karl Hofer - Werkverzeichnis der Gemälde, vol. 2, VAN HAM Art Publications, Cologne 2007, cat. rais. no. 1537, ill.

- Hofer's work combines stylistic elements of Expressionism and New Objectivity
- Unusual, modern variation on the motif of the 'bather'
- Unmistakable, minimalist visual language

Hofer's reduced pictorial language

Karl Hofer is considered one of the most important German painters of the 20th century. His work is characterised by clear, reduced forms and a melancholy, often existential pictorial language. Hofer initially received his artistic training at the Karlsruhe Academy and later in Stuttgart, where he studied under Leopold von Kalckreuth. He then continued his studies in Paris, where he became closely involved with the French art scene. After initial impressionist influences, Hofer developed a style that fell between expressionism and New Objectivity. His artistic career was shaped by the political

upheavals of the 20th century; during the Nazi era, his works were defamed as 'degenerate', but after the war he regained importance. Today, Hofer's art is seen as a powerful expression of human existence and its existential challenges. In 1941, he created the remarkable painting, which depicts a female nude as a breast piece. The figure is shown in strict side profile to the right, against a monochrome, reddish-brown background. The painter captures the moment when the naked model reaches over her right shoulder to dry herself with a fringed cloth. The female figure wears another bath towel as a striking turban on her head. The reduction to the essentials that characterises Hofer's works is evident in the simple depiction of the woman, which does without superfluous details. This draws the focus to the form and texture of the body, with light and shadow playing a central role. These contrasts not only help to emphasise the physical contours, but also create a strong visual presence that captivates the viewer. The woman in this painting appears introverted and calm, almost timeless, as if she is lost in a moment of reflection. This atmosphere of contemplation and melancholy is typical of Hofer's style and reflects his examination of the challenges of human existence. His art is both a celebration of the physical form and a profound reflection on loneliness, transience and the search for meaning in a complex world. Hofer's works thus remain a powerful expression of human existence and its existential challenges that is still relevant today.

The motif of bathers

The motif of bathers or figures depicted after bathing runs through a number of Hofer's works. He is interested in the human body and its aesthetics. The motif of bathers allows him to explore different forms, light and shadow. Light and shadow also help him to emphasise the form and texture of the bodies, creating a strong visual presence of the female body. In addition, the colour palette is muted, with warm dark earth tones that give the scene a certain heaviness. This draws the focus to the exposed body, whose contours stand out clearly against the background. The direct insight into the intimate sphere creates an exciting relationship between proximity and distance between the viewer and the woman drying herself. Hofer's typical style, which is often characterised by melancholy and loneliness, is also reflected in this work.

Estimate: 50.000 € - 70.000 €; Hammer: 42.000 €

